

# + Quick Guide

## TDS501 - Dew Point Sensor down to -70 °C Td (-94 °F Td)

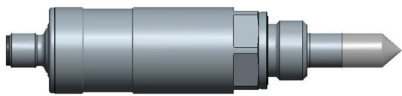


— your partner  
in sensor  
technology.

### **i** PLEASE NOTE

Find this document and further product information on our website at [www.epluse.com/tds501](http://www.epluse.com/tds501).

## Installation & Mounting

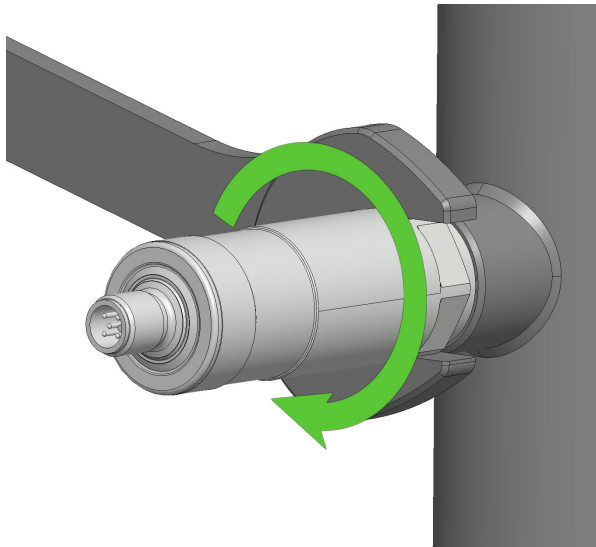


Remove the protection cap before mounting.

### **i** PLEASE NOTE

Remove the protection cap just before installation.

Select the installation location so that the M12 connector is easily accessible.



#### Tools recommended

Wrench AF27 (~ SAE wrench 1 - 1/16") (for ISO version)

Wrench AF22 (SAE wrench 7/8") (for NPT version)

#### Installation Parts recommended

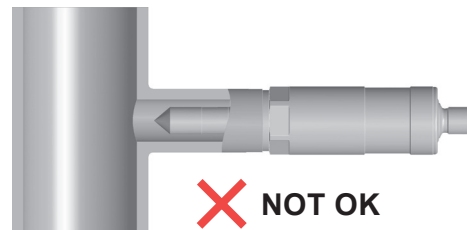
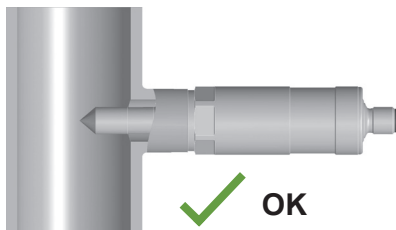
M12 sensor/actuator cable, 4 or 5-pole, IP65

Cable connector, 5-position, socket straight M12, field-installable

### **i** PLEASE NOTE

Lubricate if screwed into stainless steel thread.

For more information on the mounting options, please refer to the User Manual at [www.epluse.com/tds501](http://www.epluse.com/tds501).



## Electrical Connection

### WARNING

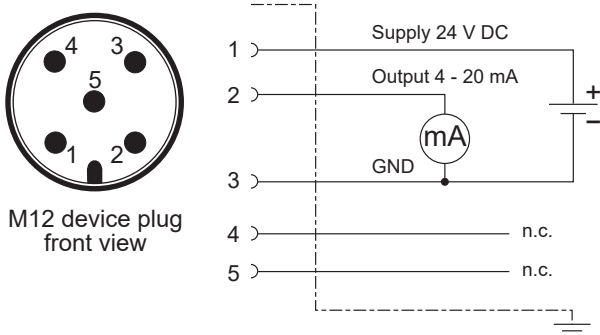
Incorrect installation, wiring or power supply may cause overheating and therefore personal injuries or damage to property. It is essential that the cables are not under voltage during installation. No voltage must be applied when the product is connected or disconnected. For correct cabling of the device, always observe the presented wiring diagram for the product version used.


The manufacturer cannot be held responsible for personal injuries or damage to property as a result of incorrect handling, installation, wiring, power supply and maintenance of the device.

### PLEASE NOTE

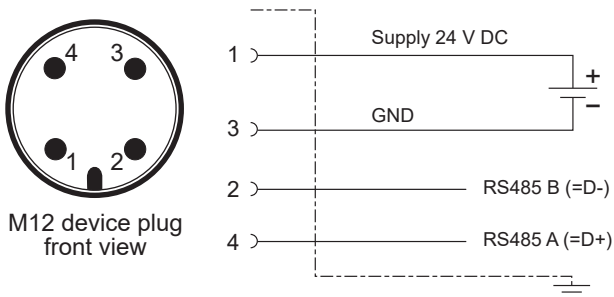
To meet the EMC Directive 2014/30/EU a shielded connection cable must be used.


#### Analogue Output 4 - 20 mA



Pin number	Function
1	Supply voltage 24 V DC class III  (Europe)/class 2 (North America)
2	Output 4 - 20 mA
3	GND
4	Do not connect
5	Do not connect

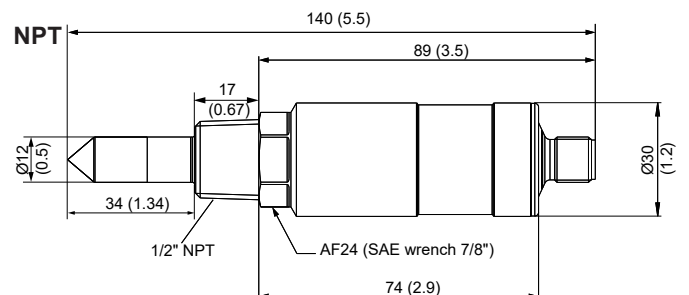
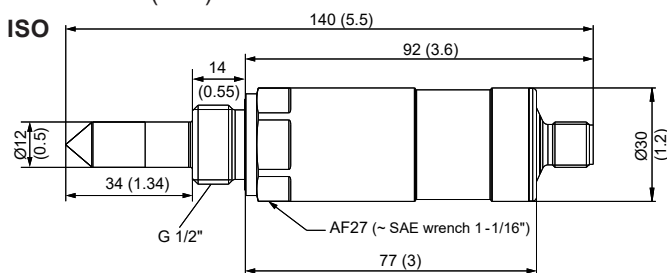
#### Digital Interface RS485 with Modbus RTU Protocol



Pin number	Function
1	Supply voltage 24 V DC class III  (Europe)/class 2 (North America)
2	RS485 B (D-)
3	GND
4	RS485 A (D+)

## Dimensions

Values in mm (inch)



**E+E Elektronik Ges.m.b.H.**  
Langwiesen 7  
4209 Engerwitzdorf | Austria  
T +43 7235 605-0  
F +43 7235 605-8  
info@epluse.com  
www.epluse.com

TDS501 User Manual



E+E Certificate Service

